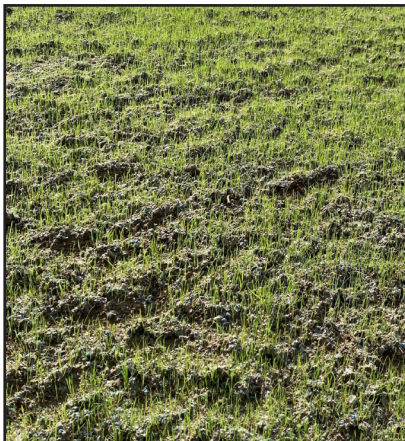


Diamond Star
Pellets

Pellet Mulch with Tack & Biostimulant



COMPOSITION

Wood, Cellulose, Tackifier/Surfactant,
Biostimulant, Dye Tracer

ECO SAFE

100% Survival 48-hr LC₅₀ Daphnia Magna method 202
EPA-821-R-02-012

Pelletized Seed Starter

Diamond Star is a pellet mulch formulated from recycled wood and cellulose fibers dosed with a biostimulant that improves soil structure and enhances plant nutrition.



Delivers biostimulant to jumpstart germination of the seed and promote healthy growth



Retains vital moisture in the soil for fast establishment



Protective Mulch Cover stays in place & holds color through germination



Easy to spread dry or apply with a HydroSeeder



Better Performance, More Professional than straw

Installation

Broadcast Spreader or By Hand

40 lb/800 Sq. feet and irrigate with about 1/10 inch of water or rainfall to activate the pellets. Apply over large areas with a PTO driven spreader or a high volume push spreader.

HydroSeeding

Mix 60-75 lb per 100 Gallons of water or up to machine capacity. Mechanically agitated gear pump machines able to handle a 1 lb to 1 gallon ratio.

Slope Gradient

*Flat to 5:1
Up to 4:1*

Application Rate

*40 lb/1000 Sq. feet
60 lb/1000 Sq. feet*

For more information, contact:

Pat Holubetz, CPESC

pholubetz@diamondstarproducts.com

513-404-8169

www.diamondstarpellets.com